

Deltaweld® 350 Systems

MIG Welding Systems 

Quick Specs

Heavy Industrial Manufacturing

General manufacturing
General fabrication
Structural steel fabrication
Transportation
Sheet metal fabrication
Light-gauge tube and sheet

Processes

MIG (GMAW-P)
Flux-cored (FCAW)
Accu-Pulse® MIG (GMAW-P)
(with Intellex™ Pro feeder)

Input Power 230/460 V, 3-phase, 60 Hz

Rated Output 350 A at 60% duty cycle

Output Range 20–400 A, 10–38 V

Net Weight 115 lb. (52.2 kg)

Make Your Move

Deltaweld systems are the manufacturing solution for welders of all skill levels, now offering pulse capabilities in an integrated package.

Ready to weld

The Deltaweld 350 System is shipped with everything you need to get welding sooner.

Dedicated wire feeder options

- Intellex feeder — New arc control feature means welders can produce better welds with minimal parameter adjustments.
- Intellex Pro feeder — Adds Accu-Pulse®, EZ-Set, steel weld programs, and memory buttons.

Legacy meets pulse

Accu-Pulse offers a more forgiving arc and compensates for variations in operator technique, providing a wider operating window.

Easy to use

EZ-Set simplifies parameter setup based on material thickness, removing complexity.



Deltaweld 350 MIGRunner™ with Intellex™ Pro feeder shown.



Power source is warranted for three years, parts and labor.
Original main power rectifier parts are warranted for five years.
Gun warranted for 90 days, parts and labor.



Miller Electric Mfg. LLC
An ITW Welding Company
1635 West Spencer Street
P.O. Box 1079
Appleton, WI 54912-1079 USA

Equipment Sales US and Canada
Phone: 866-931-9730
FAX: 800-637-2315
International Phone: 920-735-4554
International FAX: 920-735-4125

MillerWelds.com




Deltaweld® 350 System Features



Balanced-pressure drive-roll design and tensioners feed wire in its truest and straightest form for consistent feedability, resulting in better welding performance.

Accu-Mate™ connection aligns gun perfectly in the drive-roll carrier — preventing the gun from being pulled loose and providing consistent wire feeding.

Drive rolls and guides are common with other Miller® industrial feeders (use existing, not new parts).

Inlet guide and intermediate guide installation is toolless.

Rotatable drive assembly allows operator to rotate the drive, eliminating severe bends in the wire feed path. This extends gun-liner life and aids in feeding difficult wires.



Memory buttons for quick program recall

Display and controls for volts/arc length, wire feed speed, and EZ-Set (if selected)

Arc control to fine tune the welding arc

LCD setup screen for easy selection of welding processes

Jog and purge button

Trigger hold, trigger select, preflow and postflow buttons

Intelix Pro feeder shown.



Deltaweld 350 with 14-pin receptacle and optional meters shown.



Quality-engineered cable management protects your connections to keep you productive.

Wind Tunnel Technology™ Internal air flow that protects electrical components and PC boards from dirt, dust, debris — greatly improving reliability.

Fan-On-Demand™ operates only when needed reducing noise, power consumption, and the amount of airborne contaminants pulled through the machine.

ArcConnect™ is a next generation communication that utilizes high speed signals to improve weld performance and allow point-of-use controls to be located at the feeder.

Intellex™ Feeder Features



Feature	Intellex™ Feeder	Intellex™ Pro Feeder
Digital meters	■	■
Remote voltage	■	■
Wire feed speed	■	■
Arc control	■	■
Trigger hold	■	■
Wire jog and purge	■	■
Wire feed speed feedback	■	■
Four drive rolls	■	■
Rotatable drive	■	■
Up to 60 lb. spool	■	■
MIG process	■	■
EZ-Set MIG		■
EZ-Set Accu-Pulse®		■
Trigger select		■
Preflow		■
Postflow		■
Memory slots (2)		■
Out-of-box programs (steel only)		■

Processes available include:

- MIG
- EZ-Set MIG (Intellex Pro only)
- EZ-Set Accu-Pulse (Intellex Pro only)



Feeder programs (Intellex Pro only) available include:

- Steel
- Stainless steel
- Flux-cored
- Metal-cored
- Different wire sizes
- Different gas types



Feeder swivels for convenience and function:

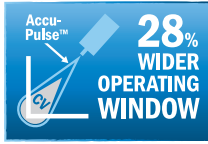
- Feeder moves with the MIG gun allowing operator to see the front of the feeder, and be sure which parameters are selected
- Eliminates wear on gun and liner assembly

Deltaweld® 350 System Processes

Take the performance of each process to the highest level

Accu-Pulse®

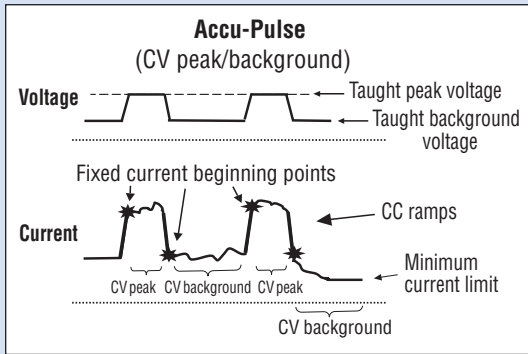
- More forgiving arc compensates for variations in operator technique
- Most adaptive arc on 16 gauge (1.6 mm) and thicker
- Designed for all weld positions



Best For	Standard Spray	Accu-Pulse	Short Circuit
Deposition	A	A	D
Gap filling	D	B	A
Low heat input	D	B	A
Out-of-position welds		A	B
Low spatter	A	A	C
Thick metals	A	A	D
Thin metals		B	A
Increased travel speed	A	A	B

HOT COLD

Ratings A, B, C, and D are relative values. An "A" rating indicates a best fit between your performance needs and process. A "blank" rating indicates that the process is not recommended for that application.



The Accu-Pulse process allows for precise control of the pulse arc. Accu-Pulse provides optimum molten puddle control and has power to increase wire feed speeds and deposition 20 to 25 percent in many applications. In most cases, slightly different ratios of gas mixtures will perform well using a similar program and adjusting arc length or the appropriate arc control for the selected process. Contact Miller for more information on less common materials and gas combinations.

Deltaweld® 350 Specifications (Subject to change without notice.)



Amp/Volt Ranges	Rated Output	Amps Input at Rated Output, 60 Hz, 3-Phase				Dimensions	Net Weight
		230 V	460 V	KVA	KW		
20–400 A, 10–38 V	300 A at 29 VDC, 100% duty cycle	26.5	14.6	11.6	10.0	H: 22.36 in. (568 mm) (including lift eye) W: 15.35 in. (390 mm) D: 29.15 in. (740 mm)	115 lb. (52.2 kg)
	350 A at 31.5 VDC, 60% duty cycle	33.4	18.1	14.5	12.5		
	425 A at 35.25 VDC, 30% duty cycle	45.1	23.1	18.5	16.9		

Certified by Canadian Standards Association to both the Canadian and U.S. Standards.

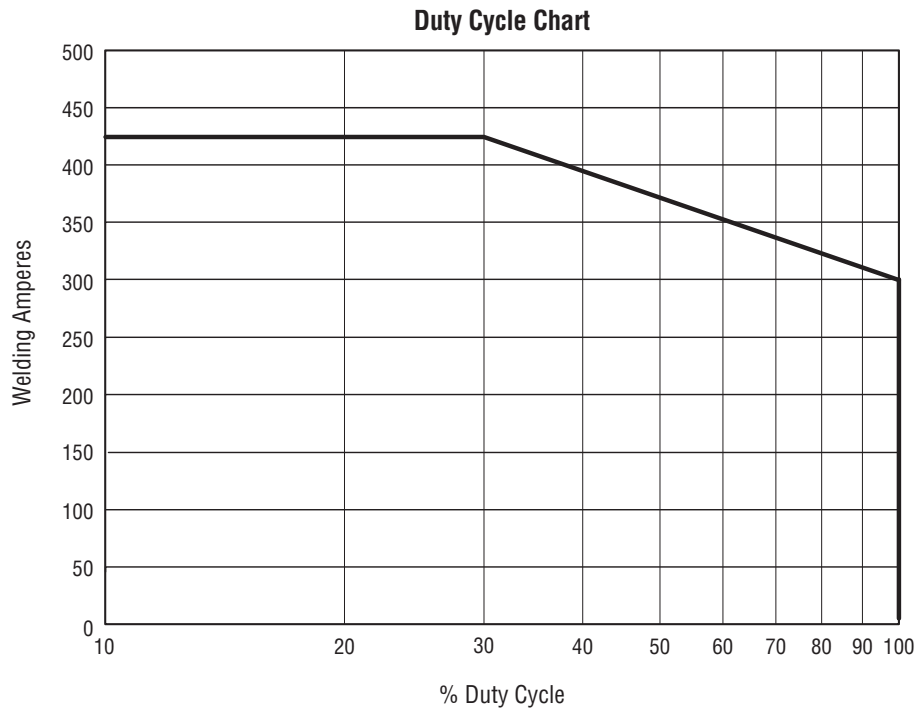
Intelx™ Feeder Specifications (Subject to change without notice.)



Input Power	Welding Power Source	Input Welding Circuit Rating	Wire Feed Speed	Wire Diameter Capacity	Maximum Spool Size Capacity	Dimensions	Net Weight
50 VDC	Deltaweld 350	600 A at 113 VDC, 60% duty cycle	Standard 50–780 ipm (1.3–19.8 m/min.)	.023–5/64 in. (0.6–2.0 mm)	18 in. (457 mm) 60 lb. (27 kg)	H: 16.25 in. (413 mm) W: 12.38 in. (314 mm) D: 27.88 in. (708 mm)	44.8 lb. (20.3 kg)

Certified by Canadian Standards Association to both the Canadian and U.S. Standards.

Deltaweld® 350 Performance Data



Genuine Miller® Accessories



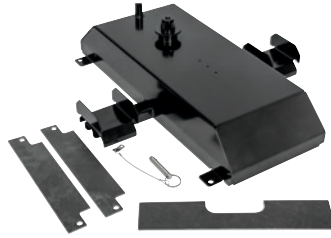
Deltaweld 350 Running Gear/Cylinder Rack 301523

Features small footprint, dual cylinder rack, chains for gas cylinders, ergonomic handle design and lockable front casters with two torch holders and storage area below.



Cart Accessory Kit 301528

For use with running gear/cylinder rack 301523. Consists of flowmeter regulator with 5-foot (1.5 m) gas hose, 8.5-foot (2.5 m) 4/0 feeder weld cable with lugs, 15-foot (4.6 m) work cable with 600-amp C clamp, 9-foot (2.7 m) ArcConnect cable, and chains for gas cylinders.



Feeder Swivel Kit 301533

Mounts to top of Deltaweld 350 and allows feeder to swivel.



Handle Kit 301529

Allows for easy movement and portability of power source.



Industrial MIG 4/0 Kit 300390

For single-wire feeders. Consists of flowmeter regulator with 10-foot (3 m) gas hose, 10-foot (3 m) 4/0 feeder weld cable with lugs, and 15-foot (4.6 m) work cable with 600-amp C-clamp.

Note: Kit is for stationary packages only, not for use with integrated cart package.



Hanging Bail 058435

Used for suspending feeder over work area.



ArcConnect Control/Motor Cables

280471009 9 ft. (2.7 m)

280471015 15 ft. (4.6 m)

280471025 25 ft. (7.6 m)

280471050 50 ft. (15.2 m)

280471075 75 ft. (22.9 m)

280471100 100 ft. (30.5 m)

280471150 150 ft. (45.7 m)

Connects power source to feeder or remote operator interface.



Work Sense Leads (volt sense)





300461 25 ft. (7.6 m)

300462 50 ft. (15.2 m)

When connected from the back of the wire feeder to the work piece, the work sense lead provides accurate voltage feedback on the wire feeder display, and compensates for any voltage drop from the weld cables.

Drive Roll Kits and Guides (Order from Miller Service Parts.)

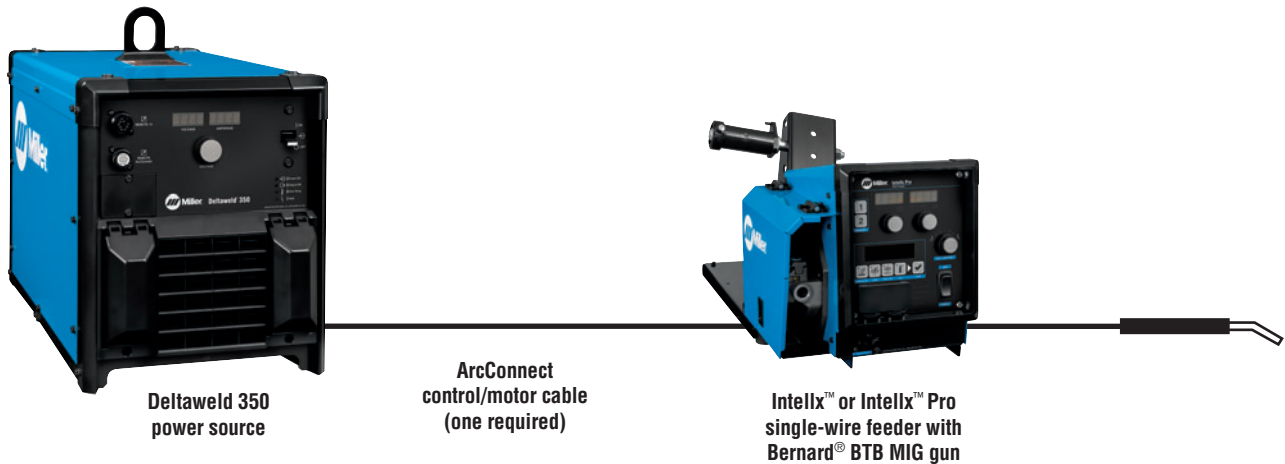
Select drive roll kits from chart below according to type and wire size being used. Drive roll kits include four drive rolls, necessary guides and feature an anti-wear sleeve for inlet guide.

Wire Size	 "V" groove for hard wire	 "U" groove for soft wire or soft-shelled cored wires	 "V" knurled for hard-shelled cored wires	 "U" cogged for extremely soft wire or soft-shelled cored wires (i.e., hard facing types)
.023/.025 in. (0.6 mm)	087132	—	—	—
.030 in. (0.8 mm)	046780	—	—	—
.035 in. (0.9 mm)	046781	044750	046792	—
.040 in. (1.0 mm)	191917	—	—	—
.045 in. (1.1/1.2 mm)	046782	046785	046793	083319
.052 in. (1.3/1.4 mm)	046783	046786	046794	—
1/16 in. (1.6 mm)	046784	046787	046795	046800
.068/.072 in. (1.8 mm)	—	—	—	—
5/64 in. (2.0 mm)	—	046788	046796	046801

Wire Guides

Wire Size	Inlet Guide	Intermediate Guide
.023–.040 in. (0.6–1.0 mm)	221030	056206
.045–.052 in. (1.2–1.3 mm)	221030	056207
1/16–5/64 in. (1.6–2.0 mm)	221030	056209
5/64–1/8 in. (2.0–3.2 mm)	229919	056211

Typical Deltaweld® 350 System Installation



Ordering Information

Complete Deltaweld 350 System	Stock No.	Description	Qty.	Price
Deltaweld® 350 MIGRunner™ with Intellix™ Feeder	951792	Consists of Deltaweld 350 power source (907747) on cart, single bench feeder, Bernard® BTB Gun 300 A, .035/.045 in. V-grooved drive rolls, flowmeter regulator with gas hose, 4/0 weld cable with lugs, work cable with 600-amp C clamp, 9 ft. (2.7 m) ArcConnect cable, and chains for gas cylinders.		
Deltaweld® 350 MIGRunner™ with Intellix™ Pro Feeder	951777			
Power Source				
Deltaweld® 350	907747 907747001	Power source with ArcConnect Power source with ArcConnect, 14-pin receptacle and meters		
Wire Feeders and Gun				
Intellix™ Wire Feeder	951783	Single-wire feeder with Bernard BTB Gun 300 A and .035/.045 in. V-groove drive rolls		
Intellix™ Pro Wire Feeder	951784	Single-wire feeder with Bernard BTB Gun 300 A and .035/.045 in. V-groove drive rolls		
Bernard® BTB Gun 300 A	Q3015AE8XMC	300 A, 15 ft. (4.6 m) with Centerfire™ consumables		
Cables				
ArcConnect Control/Motor Cables	280471009	9 ft. (2.7 m)		
	280471015	15 ft. (4.6 m)		
	280471025	25 ft. (7.6 m)		
	280471050	50 ft. (15.2 m)		
	280471075	75 ft. (22.9 m)		
	280471100	100 ft. (30.5 m)		
	280471150	150 ft. (45.7 m)		
Work Sense Leads (volt sense)	300461	25 ft. (7.6 m)		
	300462	50 ft. (15.2 m)		
Options and Accessories				
Deltaweld 350 Running Gear/ Cylinder Rack	301523			
Cart Accessory Kit	301528	See page 6 for contents		
Feeder Swivel Kit	301533	Mounts to top of Deltaweld 350 and allows feeder to swivel		
Handle Kit	301529	Allows for easy movement and portability of power source		
Industrial MIG 4/0 Kit	300390	See page 6 for contents		
Hanging Bail	058435	Used for suspending feeder over work area		

Date:

Total Quoted Price:

Distributed by:

